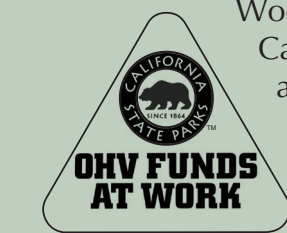


# Welcome to the Burlington Motorcycle Trail System

The trail system has 50 miles of trails suitable for motorcycles and offers opportunities for everyone, from novices through expert riders. The trail system was developed through a partnership between the Nevada County Woods Riders, State of California OHMVR Division and Tahoe National Forest.



provide convenient access to the majority of the trail system.

Burlington Ridge and Upper Burlington Ridge roads provide access to the trail system, but parking is very limited.

## Chalk Bluff And Omega Overlook Trailheads/Staging Areas

The Chalk Bluff Staging Area is reached by traveling 16 miles east on Hwy 20 from the HWY 20 and HWY 49 intersection in Nevada City. The Omega Overlook Trailhead is reached by traveling 17 miles east from the HWY 20 and HWY 49 intersection in Nevada City.

The trailheads have access to toilets. There are no trash cans at Chalk Bluff Staging Area. The trailheads do not have potable water, so plan accordingly.

# Burlington Motorcycle Trail System

## LEGEND

For trail and road open/closed status in the Burlington OHV Area, please call the Yuba River Ranger District at 530-288-3231

- ⋯⋯⋯ Motorcycle Trail (OPEN to MOTORCYCLES)
- - - - - Off-Highway Vehicle (OHV) Trail (OPEN to ALL VEHICLES)
- - - - - Unmaintained Road (OPEN to ALL VEHICLES)
- Highway
- Paved Road
- Gravel Road
- Dirt Road
- - - - - Foot or Horse Trail

No OHV use except where indicated on map

## Degree of Difficulty

- 5 Beginner Trail & Trail Number
- 28 Intermediate Trail & Trail Number
- 20 State Highway Number
- 329 County Road Number
- 29 Forest Road Number
- ⚠ OHV Staging Area
- ⚠ Campground
- ⚠ Trailhead
- ⚠ Overlook
- ⚠ Fire Station

- Tahoe National Forest
- Private Land

## Trail Descriptions

### 5 Omega (7.7 miles)

Omega Trail is accessed from Chalk Bluff Staging Area. The trail parallels HWY 20 and creates a loop opportunity back to the staging area. The trail ties into the Stanton and Towle Mill Loop trails. The trail is a tight, flowing woods riding experience with no side hill exposure.

### 9 Stanton (2.3 miles)

Stanton Trail is best accessed from the Omega or Towle Mill Loop trails. The trail provides an inner loop to the trail system and ties into the Towle Mill Loop and Omega trails. The trail is a tight, flowing woods riding experience with some side hill exposure.

### 16 Last Chance Tie (1.0 miles)

Last Chance Tie Trail is best accessed from the Last Chance Mine Road. The trail provides a longer loop that ties into the Last Chance Trail. The trail is a tight, flowing woods riding experience that is a short connector.

### 25 Deer Creek (7.8 miles)

Deer Creek Trail is accessed from the Chalk Bluff Staging Area. The trail heads south from the staging area and creates a loop opportunity. The trail provides access to the Omega and Stanton trails. The trail is a tight, flowing woods riding experience that gives novice riders the opportunity to practice cornering. The trail has a few spots with side hill exposure.

### 28 Excelsior (12.4 miles)

Excelsior Trail is accessed from the Chalk Bluff Staging Area. The trail heads east from the staging area and creates a loop opportunity. The trail provides access to the Last Chance Trail. The trail is a tight, flowing woods riding experience with some technical features and switchbacks to test rider's skills.

### 54 Omega Overlook (4.5 miles)

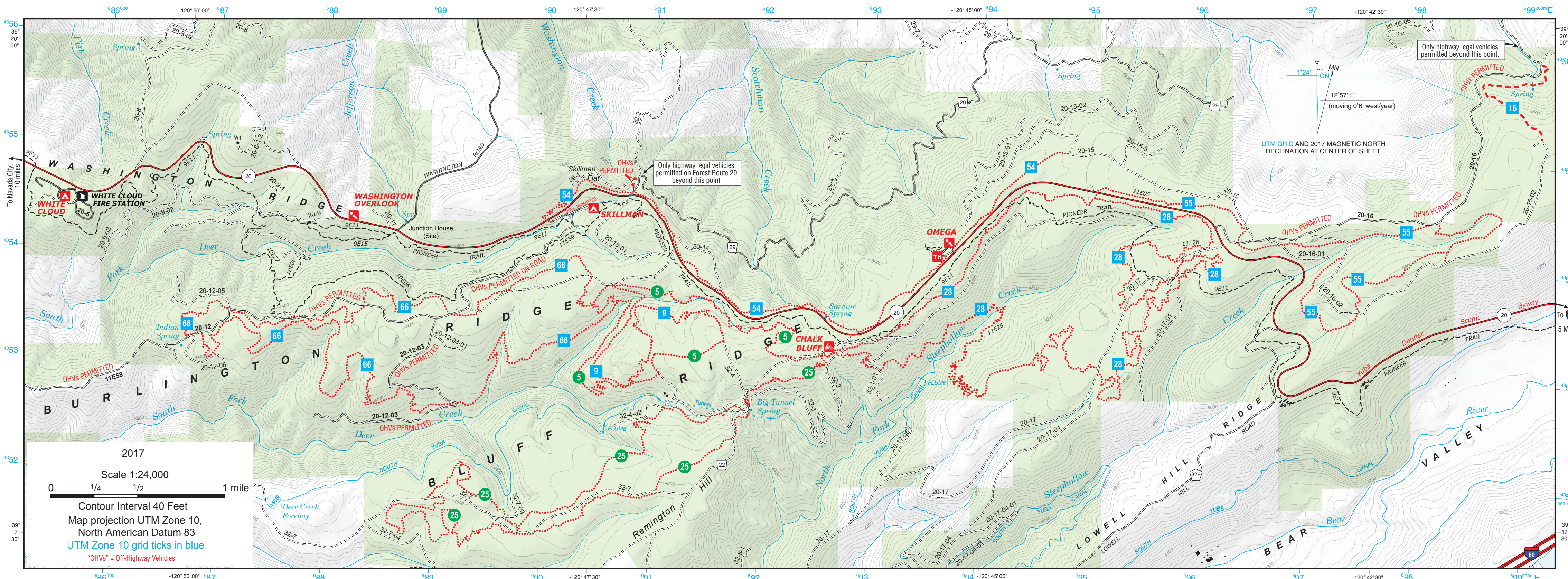
Omega Overlook Trail is accessed from the Skillman Campground area or the Omega Overlook Trailhead. The trail parallels HWY 20 and provides access to the greater trail system at Upper Burlington Road or Burlington Road. The trail is a tight, flowing woods riding experience with some technical features and exposure to test rider's skills.

### 55 Last Chance (4.0 miles)

Last Chance Trail is accessed from the Last Chance Mine Road or the Omega Overlook Trailhead. The trail provides a loop opportunity and access to Excelsior or Last Chance Tie trails. The trail is a tight, flowing woods riding experience with some technical features and exposure to test rider's skills.

### 66 Towle Mill (9.6 miles)

Towle Mill Loop Trail is accessed from Burlington Ridge Road or off the Omega and Stanton trails. The trail provides a loop opportunity and access to the Omega or Stanton trails. The trail is a tight, flowing woods riding experience with some technical features and exposure to test rider's skills.



## IMPORTANT: MOTOR VEHICLE USE

This Burlington Motorcycle Guide is designed to be used with the **Motor Vehicle Use Maps (MVUM)** for the Tahoe National Forest. The MVUM shows National Forest System roads, National Forest System trails, and the areas on the National Forest System lands in the Tahoe National Forest that are designated for motor vehicle use pursuant to 36 CFR 212.51.

National Forest road, trail, and area users must comply with the Motor Vehicle Use Map, as well as Federal, State, and local laws and regulations. Compliance with these rules is the responsibility of the user. The MVUM is available at any Tahoe National Forest office and can also be found on the Tahoe National Forest website: [www.fs.usda.gov/tahoe](http://www.fs.usda.gov/tahoe)

## Finding Your Way

- 7 This post is found at all trail intersections and crossings. You can use these markers to help you stay on the designated routes.

- TIE 3-4 This marker is found at each trailhead. It tells you the type of vehicle permitted, trail number and degree of difficulty.

## OHV Laws & Regulations

OHV (Off-Highway Vehicle) use on National Forest System lands is regulated by both Federal and State laws.

### OHV Registration and Non-Resident Permit Requirements

OHVs are required to display a current visible Green or Red DMV registration sticker or a Non-Residence sticker/permit (CVC 38020).

The registration stickers or the non-resident permit must be displayed on the left fork leg of a motorcycle, or on the left rear quadrant on permanent plastic or metal frame members of ATVs (CVC 38170 (c)).

### Green Sticker

A green and white adhesive type I.D. (registration sticker) for OHVs is for off-road use only. The sticker is issued from California Department of Motor Vehicles and is good for two years.

The Green Sticker allows vehicles to operate on public land all year.

### Red Sticker

A red and white adhesive type I.D. (registration sticker) for OHVs is for off-road use only. The sticker is issued from California Department of Motor Vehicles and is good for two years.

The Red Sticker is issued for OHVs that do not meet California Air Resources Board emission standards. These are generally two stroke OHVs. These OHVs are identified with either a 3 or C in the eighth position of the Vehicle Identification Number (VIN). Red Sticker OHVs have a predetermined season to ride throughout the State.

Contact the Off-Highway Motor Vehicle Recreation Division (916) 324-4442 or [www.ohv.parks.ca.gov](http://www.ohv.parks.ca.gov) for the entire list of approved riding areas and dates statewide.

### Non-Resident Sticker/permit

Out-of-state visitors with unregistered OHVs are required to purchase a Non-Resident OHV Permit. If your OHV has a valid permit/registration from your home state, you do not have to buy the California non-resident permit. The funding for this permit contributes to the construction and maintenance of the OHV facilities. The permit may be purchased at many motorcycle and ATV sales locations. Contact the California Off-Highway Motor Vehicle Recreation Division for the nearest outlet.

Mail to:

OHMVR Division, Non-Resident OHV Permit Program, PO Box 942896, Sacramento, CA 94292-0001, Phone: (916) 324-4442,

E-mail: [pubinfo@parks.ca.gov](mailto:pubinfo@parks.ca.gov).

### Paved Roads

OHV use on or adjacent to any paved road is strictly prohibited except to cross at a 90 degree angle to the road. Only street legal vehicles are permitted on paved roads (CVC 38025).

### OHVs Must Stay on the Trail

OHV use is restricted to the designated trail system only.

### Dual Purpose Motorcycle

A motorcycle with a street-legal license plate can be operated both on-and-off-highway. To operate on paved roads you must have a license plate, working headlight, brake light, and turn indicators and have a valid driver's license with motorcycle endorsement, current proof of insurance in possession and wear a helmet approved by DOT.

### Noise

All OHVs must meet Federal and State noise standards. If your OHV was manufactured before January 1, 1986, noise limit is 101 dBA. On or after January 1, 1986, noise limit is 96 dBA (CVC 3870(H)).

### Spark Arrestors

All OHVs are required to have a Forest Service-approved spark arrestor and adequate muffler, both in working order (36CFR 261.52 (j)). "Closed Course Competition Motorcycles" (such as moto-cross) or vehicles set up for racing are not sold with a spark arrestor and will not generally meet noise standards without modification.

It is illegal to operate any OHV on public lands without the approved spark arrestor or meeting the required noise standards.

### Speed

You may not drive a motor vehicle on a trail or a highway at a speed greater than is reasonable or prudent, and in no event at a speed that endangers the safety of other persons or their property (CVC 38305). The speed limit is 15 mph within 50 feet of campgrounds, campsites, staging areas, or concentrations of people or animals. California's Basic Speed Law applies (CVC 38310).

### Two-way Traffic

All OHV trails are open to two-way traffic. Ride and drive defensively. Always anticipate oncoming traffic. Assistance in the event of an accident is generally a minimum of one hour away. To reduce your chances of injury, follow these common sense tips:

**Use your headlight at all times.** Any OHV operated between sunset and sunrise must display at least one headlight that enables an operator to see clearly 200 feet ahead and one red tail light visible for 200 feet (CVC 3835, 38345).

**Wear an approved safety helmet** and proper protective gear, such as boots, gloves, long sleeved shirt, and pads.

**Slow down and signal the number of riders in your group behind you** when approached by another rider from the opposite direction.

**Uphill traffic has the right of way.**

## Motorcycle Operators

All trails at the Burlington Motorcycle Trail System are open to motorcycles, hikers, equestrians, and mountain bikes. Please use caution and share the trail.

There are no established age and size guidelines for dirt bikes. Keep in mind, one must be able to safely reach and operate all vehicle controls (CVC 38304, 38304.1). Always follow the manufacturer's age and size recommendations.



### Dirt Bike Riding Tips

1. Always wear a DOT-compliant helmet, goggles, long sleeves, long pants, over-the-ankle boots, and gloves.
2. Except for dual-purpose models, never ride on paved surfaces except to cross when done safely and permitted by law. Dirt bikes are designed to be operated off-highway.
3. Never ride under the influence of alcohol or drugs.
4. Supervise riders younger than 16; dirt bikes are not toys.
5. Never permit youngsters to ride dirt bikes that are too tall or too powerful for their capabilities.
6. Don't ride alone on remote trails. Use the buddy system.
7. Ride only on designated trails and at a safe speed.
8. Take a hands-on riding course. Visit [DirtBikeSchool.org](http://DirtBikeSchool.org)

### Quick Contact Reference

<b>Emergency</b>	Medical, Law, or Fire	<b>911</b>	
<b>Trail or District Info.</b>	Yuba River Ranger District	<b>(530) 478-6253 or 288-3231</b>	<b><a href="http://www.fs.usda.gov/tahoe">www.fs.usda.gov/tahoe</a></b>
<b>OHV Registration</b>	Calif. Dept. of Motor Vehicles	<b>(916) 324-4442</b>	<b><a href="http://www.ohv.parks.ca.gov">www.ohv.parks.ca.gov</a></b>
<b>Safety Certificate</b>	Motorcycle Safety Foundation	<b>(877) 288-7093</b>	<b><a href="http://www.dirtbikeschool.org">www.dirtbikeschool.org</a></b>
<b>Law Enforcement</b>	Nevada County Sheriff Yuba River Ranger District	<b>(530) 265-1471</b> <b>(530) 478-6253 or 288-3231</b>	



Tread Lightly is a program designed to protect the land and your right to ride. Irresponsible use can damage the environment and lead to area closures.

Let your passage be as unnoticeable as possible. Follow all regulations. Stay on roads and trails designated for such use. Avoid cutting across switchbacks or through mountain meadows. Don't spin wheels unnecessarily. Avoid driving in streams or on steep hills with loose soil. Don't harass livestock or wildlife. Leave natural features as you find them.



Driving off the trail (which damages soil and plants) is illegal and leads to areas being closed to OHV use.

### General Information:

Organized activities, events, etc. may require a Special Use Permit, contact the Yuba River Ranger Station at (530) 478-6253.

Routes are subject to closure due to fire, weather, or other special conditions.

### Medical Facilities

Sierra Nevada Memorial Hospital in Grass Valley is the nearest full service medical facility. Their emergency number is (855) 263-0032. From Chalk Bluff Staging Area, the travel time is approximately 25 minutes to reach the hospital. From Chalk Bluff Staging Area, head west on HWY 20 for 18.8 miles. Take the exit for Dorsey Drive and travel .2 miles. Turn left onto Catherine Lane and travel .1 miles. Turn left onto Glasson Way and the destination will be on your right.

### Alcohol

Laws that pertain to driving under the influence of alcohol apply to OHV use. Responsible off-highway vehicle enthusiasts do not drink and drive.

### Telephones

Cell phone service in the trail system is fairly reliable. The best service is at Chalk Bluff Staging Area. The nearest facilities to the area are roughly 5 miles away at the Harmony Ridge Market on HWY 20.

### Camping Information

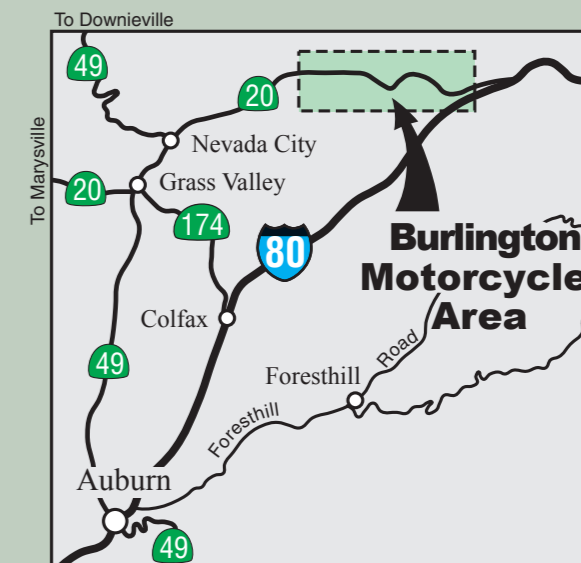
Tents and RVs are allowed at White Cloud and Skillman campgrounds. These are not OHV staging areas. From White Cloud, users will need to trailer their OHVs to the designated staging area or trailheads. Fires are permitted only in the metal fire rings provided. Collecting of dead and down wood is permitted for use while visiting the area. These campgrounds are open from April to October, weather permitting.

For more information, visit the Tahoe National Forest Website at [www.fs.usda.gov/tahoe](http://www.fs.usda.gov/tahoe) or call (530) 478-6253.

These sites can be reserved by calling Toll Free (877) 444-6777 (International (518) 885-3639 or TDD (877) 833-6777), or on-line at [www.recreation.gov](http://www.recreation.gov)

### Campfires

Outside of developed sites, a campfire permit is required for a campfire, gas stove, BBQ or any device that produces flame. Campfires may be restricted or prohibited during periods of high fire danger. Check with the Yuba River Ranger Station for up-to-date information.



For more information

Tahoe National Forest  
Yuba River Ranger District  
15924 Highway 49  
Camptonville, CA 95922  
(530) 288-3231 or 478-6253 (voice)  
From TTY call 711 to connect to the Forest Service phone number.

[www.fs.usda.gov/tahoe](http://www.fs.usda.gov/tahoe)  
[www.ohv.parks.ca.gov](http://www.ohv.parks.ca.gov)

### Emergencies Call 911



To download a free digital version of this map on a mobile device, download and open the **Avenza Map App** and scan this QR code using the QR reader in the app.

<https://www.avenzamaps.com/maps/789507>



Produced in cooperation with the USDA Forest Service, which is an equal opportunity service provider, employer and lender

# Burlington Motorcycle Trail Guide



**Burlington Ridge**  
**Tahoe National Forest**  
**California**

2017